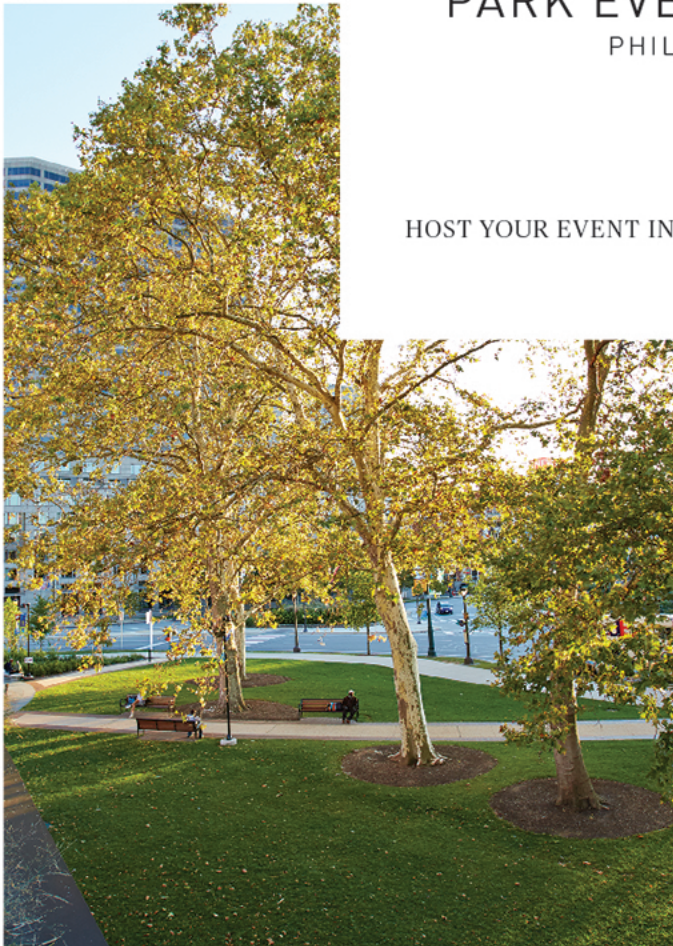




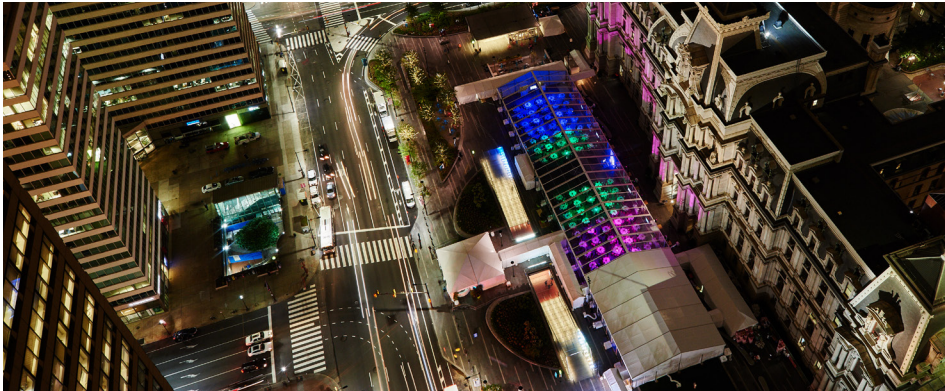
## PARK EVENT RENTALS PHILADELPHIA

HOST YOUR EVENT IN THE CENTER OF EVERYTHING





# DILWORTH PARK RENTALS



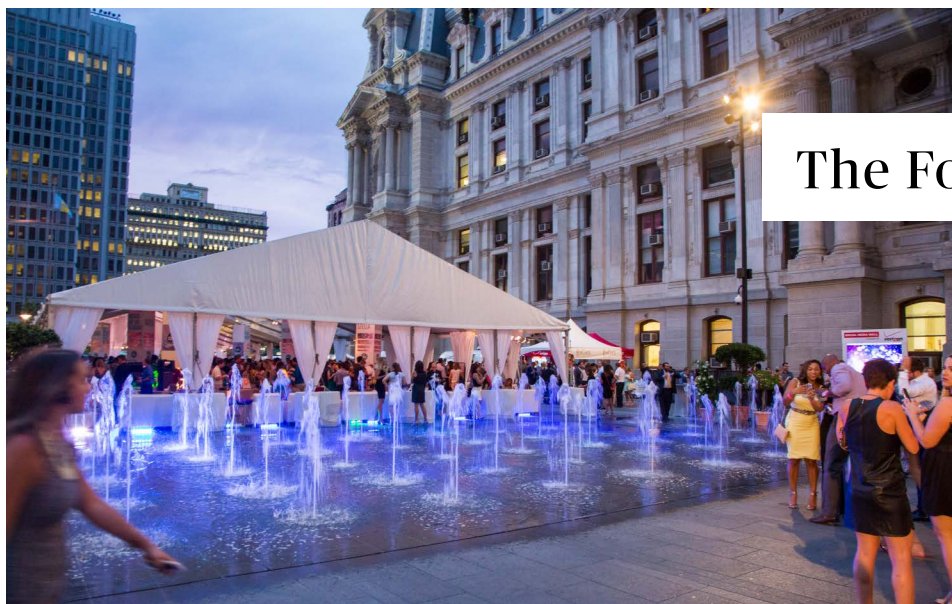
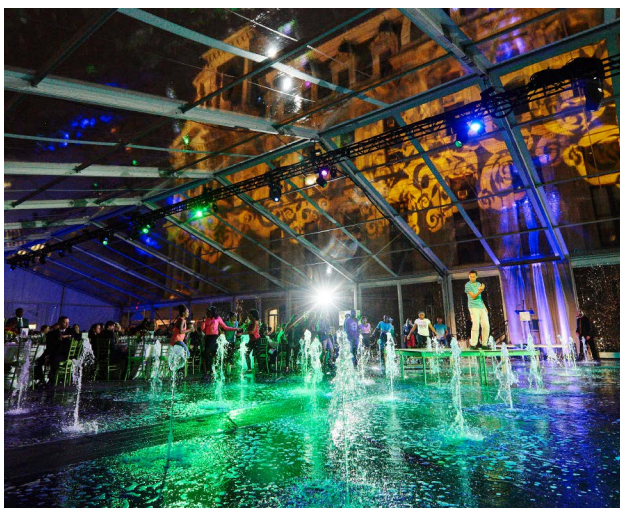
## DILWORTH PARK RENTALS

Broad & Market Streets, West Side of City Hall

Dilworth Park – Philadelphia's brand-new \$55 million installation– joined the ranks of the city's most desirable venues in September 2014. This grand, state-of-the-art park promises a new standard for corporate, social and celebratory functions, and offers the flexibility to accommodate every need. Imagine your convention event, corporate or wedding reception, product launch, gala, or brand activation at the center of Center City, adjacent to historic City Hall.



# DILWORTH PARK FEATURES



## The Fountain

The Fountain at Dilworth is water sculpture set in motion; it streams hundreds of water spouts at random intervals—a lively accent to your festivities. The fountain jets can be custom-programmed at your discretion.

# DILWORTH PARK FEATURES



## The Albert M. Greenfield Lawn

This green space surrounded by seating areas offers endless ways to entertain. Whether you're planning a company picnic complete with lawn games, a festival, an outdoor movie screening or a lunchtime concert, the great lawn provides a splash of greenery in the city's most vibrant new park.





# DILWORTH PARK FEATURES



## PNC Terrace

Crowds find their comfort level at the PNC Terrace, an inviting open space adjacent to the café, offering views up the Parkway to the Philadelphia Museum of Art. This terrace can seat over 50 people, and the café can seat for 25 more. Make the PNC Terrace your go-to place to host networking events or a casual company lunch. It's an intimate garden oasis right at the center of it all.





# DILWORTH PARK

Broad & Market Streets, West Side of City Hall

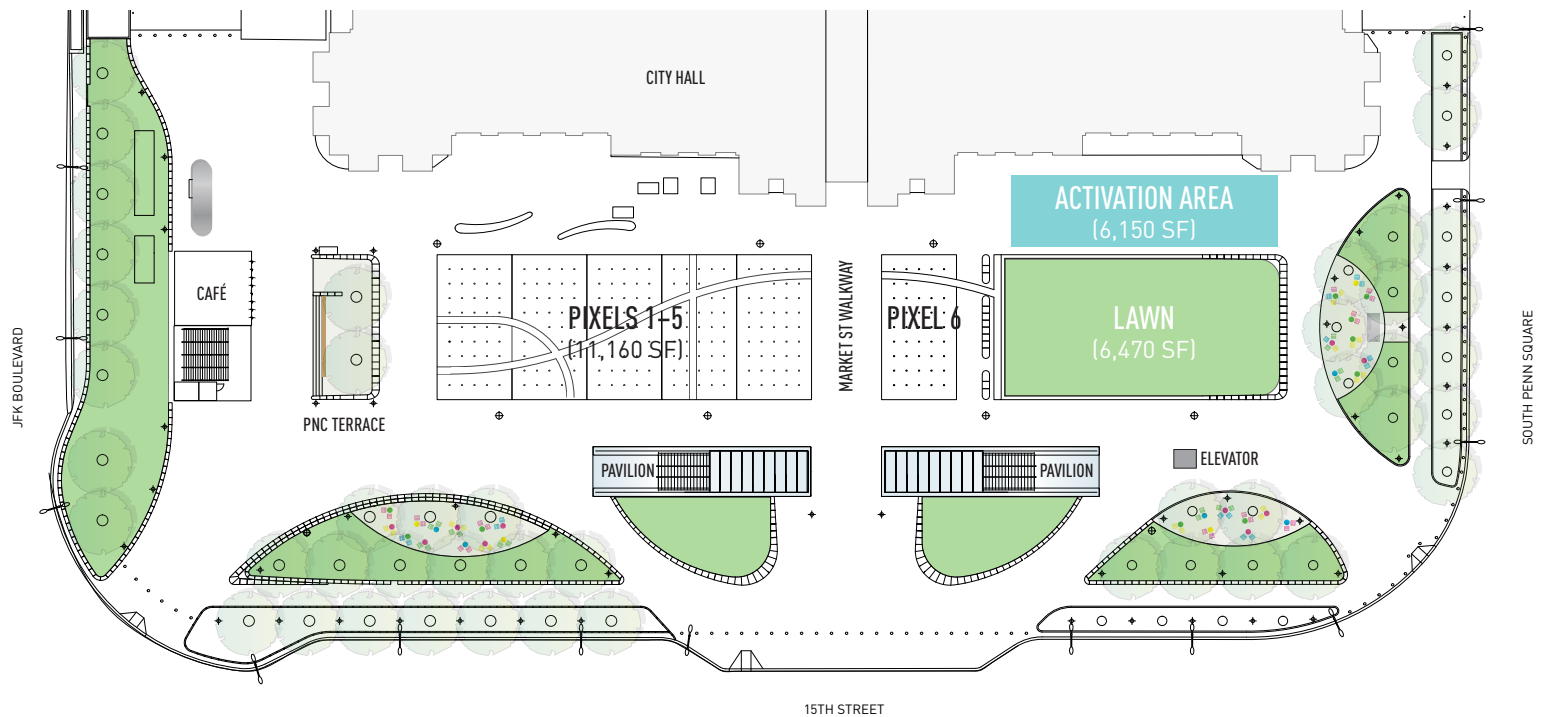


## Within Walking Distance

Philadelphia's major office district, the Pennsylvania Convention Center, major hotels, the Avenue of the Arts & the Masonic Temple.



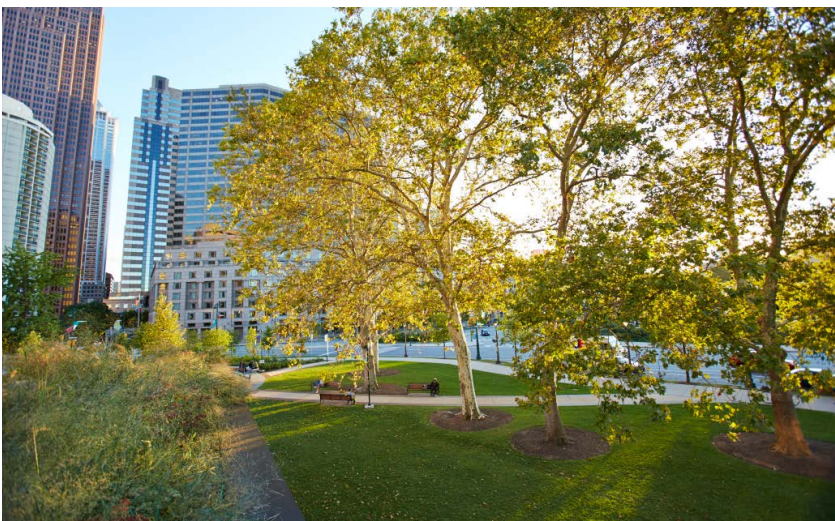
# DILWORTH PARK TENT CAPACITIES



AREA	SEATED DINNER	DINNER WITH DANCING/STAGE	THEATER STYLE	STANDING ROOM ONLY
Lawn	400	300	600	1,300
Pixels 1-5	750	550	1,100	2,250
Pixel 6	120	90	200	350
Market St Walkway	100	85	175	340
<b>All Three Spaces + Walkway</b>	<b>1,500</b>	<b>1,200</b>	<b>2,200</b>	<b>4,500</b>



# SISTER CITIES PARK RENTALS



## SISTER CITIES PARK RENTALS

18th Street and the Benjamin Franklin Parkway

At the midpoint on the Benjamin Franklin Parkway between City Hall and the Philadelphia Museum of Art, Sister Cities Park adds a picturesque swath of green to the heart of Philadelphia's notable arts and cultural district. From here, panoramic views bring skyscrapers, historic cathedrals and museums into harmony, while the Sister Cities fountain, a unique representation of the world with Philadelphia at its center, is close enough for adults to touch and children to run through. The fountain's eleven geyser-like spouts symbolize our eleven sister cities, each positioned according to its global relationship to Philadelphia.

Sarah Anello, Venue Sales Specialist 215.440.5507 or [rentals@centercityphila.org](mailto:rentals@centercityphila.org)

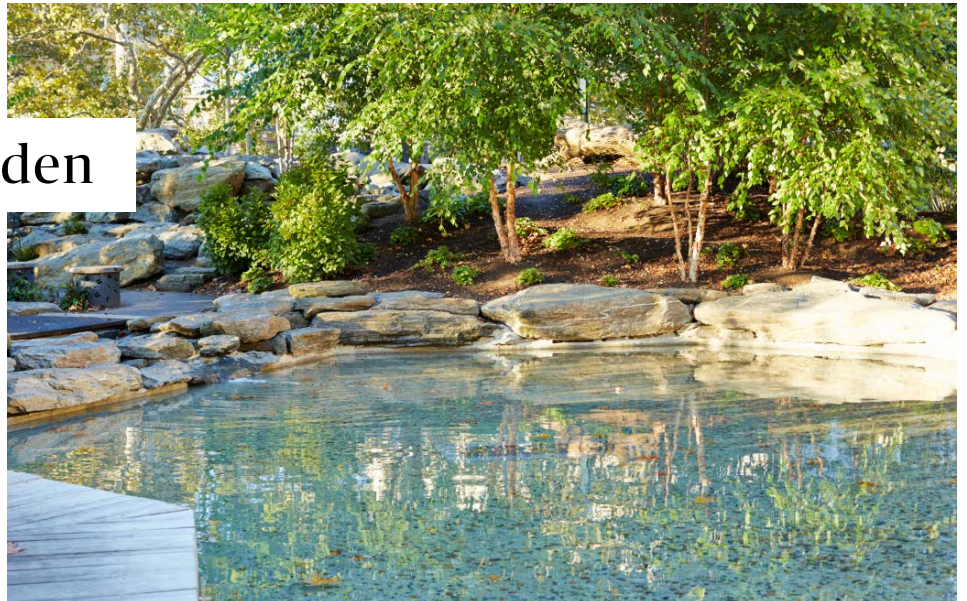


# SISTER CITIES PARK FEATURES



## Discovery Garden

This green space surrounded by seating areas offers endless ways to entertain. Whether you're planning a company picnic complete with lawn games, a festival, an outdoor movie screening or a lunchtime concert, the great lawn provides a splash of greenery in the city's most vibrant new park.





# SISTER CITIES PARK

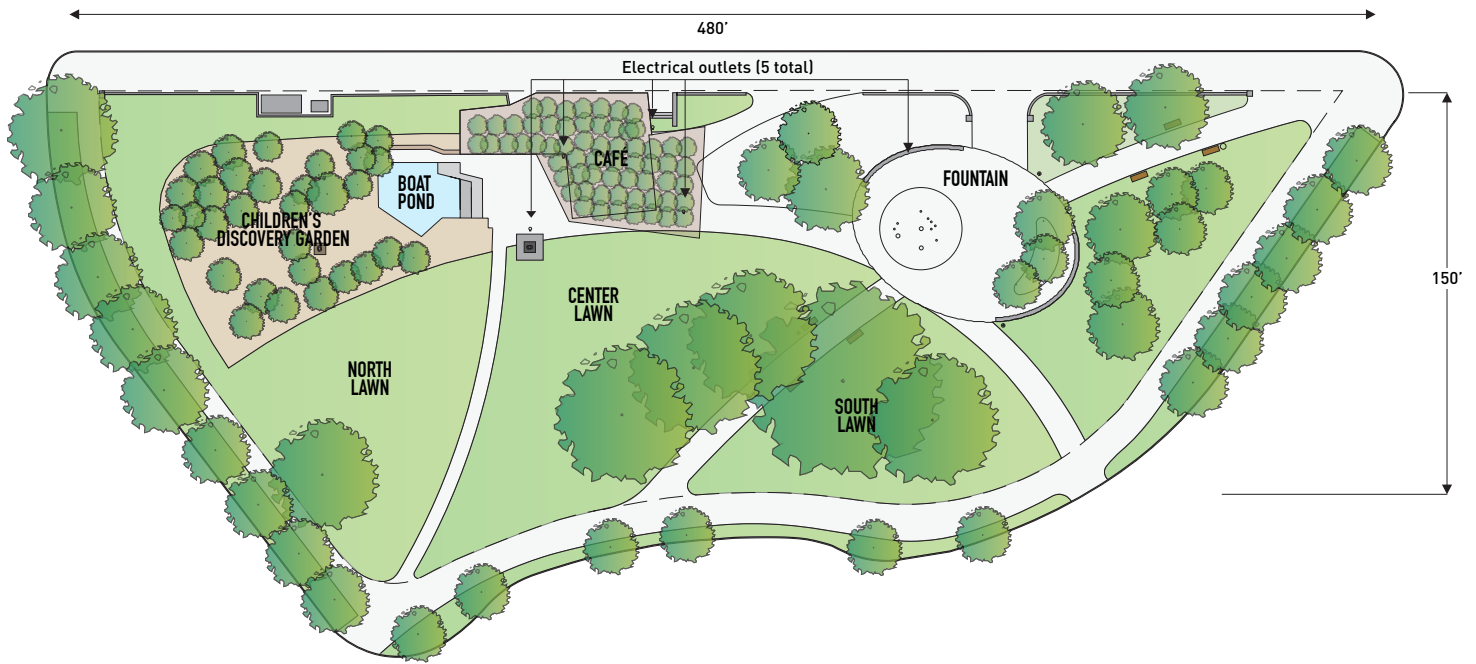
18th Street and the Benjamin Franklin Parkway



## Located in Logan Square

Positioned between the Basilica of Saints Peter and Paul, Swann Fountain and the Logan Hotel. Within a short walk of The Barnes Foundation, Embassy Suites Hotel, The Franklin Institute, The Academy of Natural Sciences of Drexel University, Free Library of Philadelphia, Philadelphia Museum of Art and all major downtown office buildings.

# SISTER CITIES PARK CAPACITIES



AREA (NO TENTING)	SEATED DINNER	DINNER WITH DANCING/STAGE	THEATER STYLE	RECEPTION/STANDING ROOM ONLY
North Lawn	135	100	200	400
Center Lawn	270	200	500	800
South Lawn & Fountain	270	200	500	800
Discovery Garden	N/A	N/A	N/A	100
Café	30	N/A	50	50
Entire Park	600	500	1000	2000

## TENT CAPACITIES

	SIT DOWN DINNER	SIT DOWN DINNER WITH DANCING	THEATRE OR CEREMONY STYLE	RECEPTION
Tent Size	(Tables & Chairs)	(Tables, Chairs, & Dancing)	(Chairs Only)	(Standing Room Only)
20'x30'	30 to 40	24 to 30	50 to 75	50 to 120
20'x60'	60 to 80	48 to 60	100 to 150	100 to 240
30'x30'	45 to 60	36 to 45	75 to 112	75 to 180
40'x60'	120 to 160	96 to 120	200 to 300	200 to 480
40'x75'	150 to 200	120 to 150	250 to 375	250 to 600



# JOHN F. COLLINS PARK RENTALS



## JOHN F. COLLINS PARK RENTALS

1707 Chestnut Street - Between Chestnut and Ranstead Streets

John F. Collins Park is a hushed, landscaped hideaway tucked within Center City's bustling business district. Adjacent to one of Center City's busiest streets, it can now be a private haven for you and your guests. The entrance from Chestnut Street leads through a wrought iron gateway sculpted with whimsical animal life. Inside, you're transported to a dreamlike garden defined by a sculpture fountain, blossoming flowers and cozy stone benches. This hidden gem is home to elegant cocktail parties, small receptions and intimate wedding ceremonies – making indelible memories along the way.

# JOHN F. COLLINS PARK

1707 Chestnut Street - Between Chestnut and Ranstead Streets

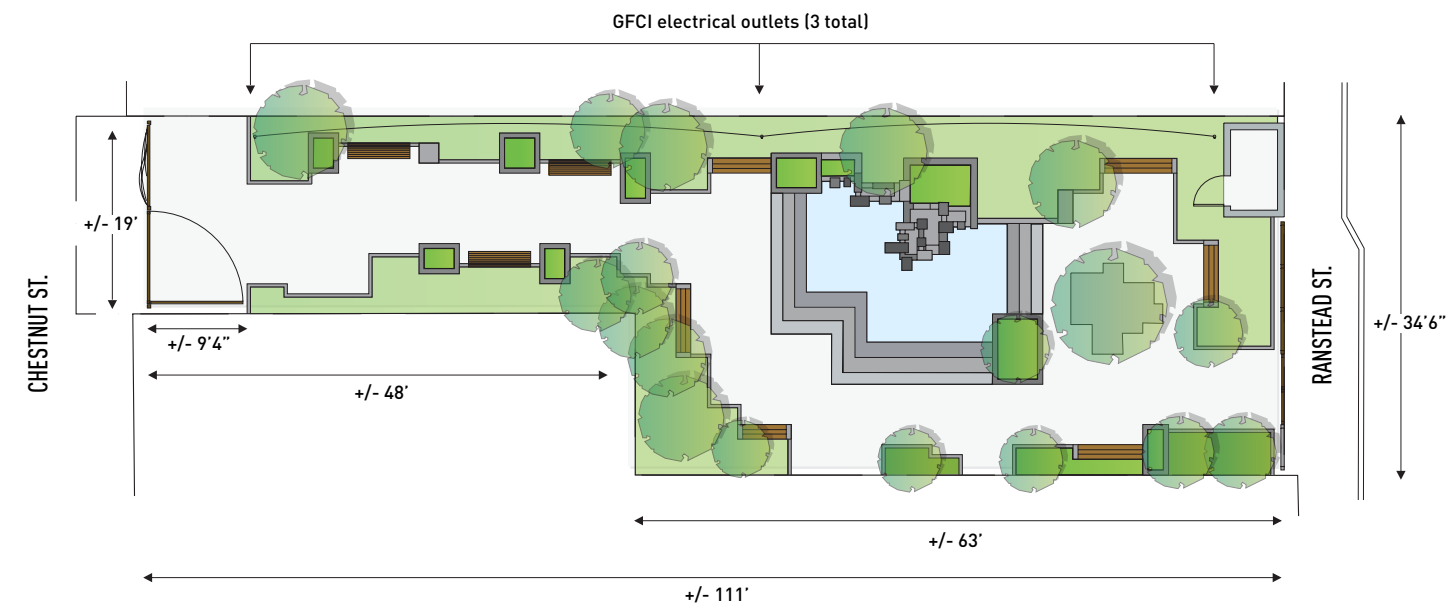


## Within Walking Distance

Westin, Sofitel, Palomar Hotels, all major downtown office buildings,  
Rittenhouse Row shopping district.



# JOHN F. COLLINS PARK CAPACITIES



JOHN F. COLLINS PARK	SEATED DINNER	DINNER WITH DANCING	RECEPTION
Capacities	60	40	100